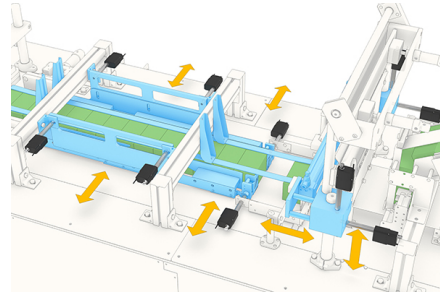




Eight criteria for choosing between fluid-driven and electric actuators

Researching and deciding on the optimal actuator solution for your linear motion design projects is no easy task. A recent *Plant Engineering* article tackled this topic, detailing eight key criteria when making your choice. These include:

- Motion profile control
- Impact on cleanliness and safety
- Durability and maintenance
- Ambient noise
- Energy efficiency
- Space efficiency
- Integration with other applications
- Total cost of operations



Click below to read the full article and learn more about maximizing value and ROI by selecting the right actuator for your machines.

[Read the Article >](#)

[Find Your Ideal Electric Actuator >](#)

+ education/events

Webinar | March 25 @ 10am CT How to Improve Shock Load Resistance & Power Density for Your Demanding Applications

Many demanding applications – from construction vehicles and ag sprayer booms to snow plows and lawn mower decks – are faced with durability challenges while in motion. To tackle extreme loads, bouncing and impact force, design engineers have begun to specify electro-hydraulic linear actuators, which deliver high shock resistance and power density.

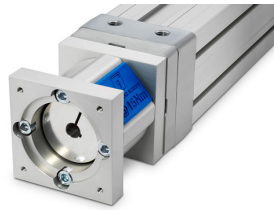
In this 30-minute webinar, we will explore how these self-contained, rugged actuators can provide the ideal solution for your more demanding, space-constrained applications.

[Register Now >](#)



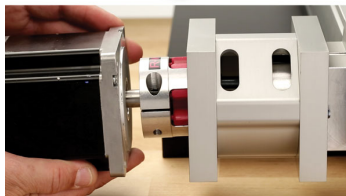
Don't waste valuable time searching for the right motor flange kit
Meet the RediMount™ adapter kit

Designed to accommodate more than 500 different motors from a variety of manufacturers, the pre-assembled Thomson RediMount adapter kit eliminates the need for custom-made, intermediate flanges between your choice of linear motion system and motor. No additional hardware is needed!



Thomson has expanded its products available with RediMount to include:

- M (Movopart®) linear units
- WH (SpeedLine) linear units
- WM (PowerLine), WV (DynaLine) and MLS (ForceLine) linear units
- T-Series precision linear actuators (T60/T90/T130)



[Watch the RediMount Tech Tips Video >](#)

Share via Social Media:



Share via e-mail:

